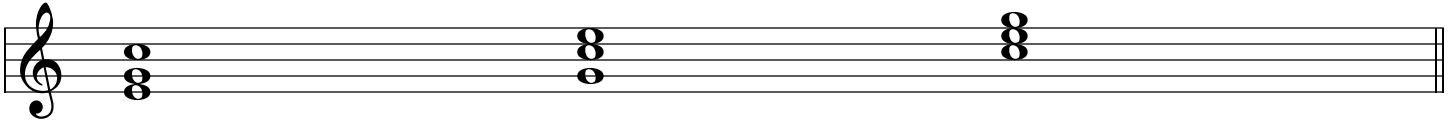


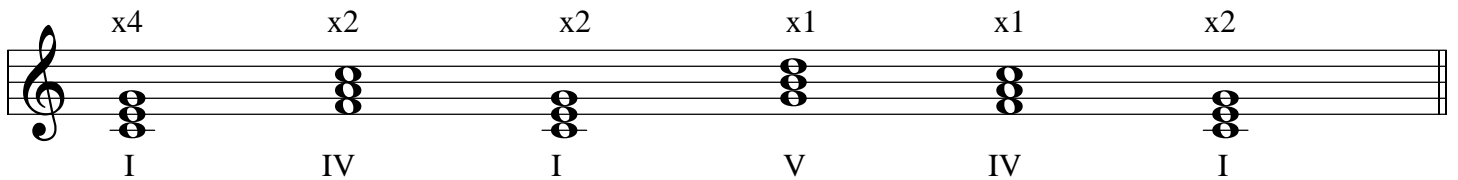
....Let's learn a few facts about Blues....

- 1) Blues originated in North America over 100 years ago.
- 2) The repeating Bass Accompaniment is called an Ostinato or Riff.

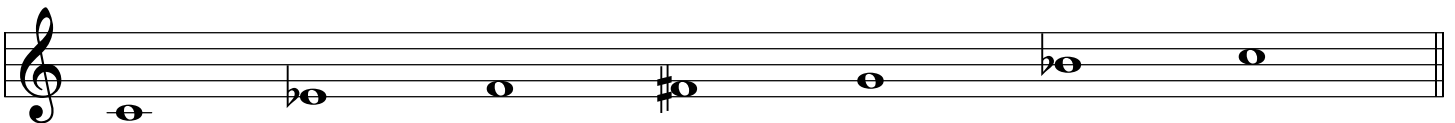
These are chord inversions. You can create chord inversions by moving the notes around in the chords. Each chord inversion has a different note at the bottom of the chord.



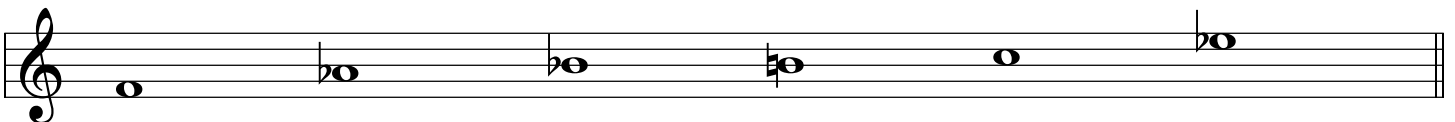
12 bar Blues is the most common type of Blues Music, built from 3 different chords based on the 1st, 4th and 5th notes of a scale. They are called chords I, IV, V and are also known as the Primary Triads.



This is a typical Blues Scale built of Chromatic notes and Diatonic notes. The pattern can be repeated starting on different notes. (Chromatic = sharps and flats, Diatonic = normal notes)



This is the Blues Scale starting on the note F.



Title: _____

Composed by: _____

Piano

Musical notation for measures 1 and 2. The piece is in 4/4 time. The right hand (treble clef) starts with a quarter rest, followed by a quarter note chord (F4, C5), a quarter rest, and a quarter note chord (F4, C5). The left hand (bass clef) plays a sequence of notes: F3, Bb3, D4, F#4, G4, Bb4, D5.

3

Musical notation for measures 3 and 4. The right hand continues with a quarter rest, a quarter note chord (F4, C5), a quarter rest, and a quarter note chord (F4, C5). The left hand continues with the sequence: F3, Bb3, D4, F#4, G4, Bb4, D5.

5

jump to Coda
✿

Musical notation for measures 5 and 6. The right hand starts with a quarter note chord (F4, C5), a quarter rest, a quarter note chord (F4, C5), a quarter rest, and a quarter note chord (F4, C5). The left hand continues with the sequence: F3, Bb3, D4, F#4, G4, Bb4, D5.

7

Musical notation for measures 7 and 8. The right hand starts with a quarter rest, a quarter note chord (F4, C5), a quarter rest, and a quarter note chord (F4, C5). The left hand continues with the sequence: F3, Bb3, D4, F#4, G4, Bb4, D5.

9

Musical notation for measures 9 and 10. Measure 9: Treble clef has a pair of beamed eighth notes (G4, A4), a quarter rest, and a triplet of eighth notes (Bb4, A4, G4). Bass clef has a quarter note (F3), a quarter note (G3), and a triplet of eighth notes (Ab3, G3, F3). Measure 10: Treble clef has a pair of beamed eighth notes (G4, A4), a quarter rest, and a triplet of eighth notes (B4, Ab4, G4). Bass clef has a quarter note (F3), a quarter note (G3), and a triplet of eighth notes (Ab3, G3, F3).

11

Musical notation for measures 11 and 12. Measure 11: Treble clef has a quarter rest, a dotted quarter note (G4), and a quarter rest. Bass clef has a quarter note (F3), a quarter note (G3), a quarter note (Ab3), and a quarter note (G3). Measure 12: Treble clef has a quarter rest, a dotted quarter note (G4), and a quarter note (F4). Bass clef has a quarter note (F3), a quarter rest, and a quarter note (G3).

13

Create your own RH

Musical notation for measures 13 and 14. Measure 13: Treble clef is empty. Bass clef has a quarter note (F3) and a quarter note (G3). Measure 14: Treble clef is empty. Bass clef has a quarter note (F3) and a quarter note (G3).

15

Musical notation for measures 15 and 16. Measure 15: Treble clef is empty. Bass clef has a quarter note (F3), a quarter note (G3), a quarter note (Ab3), and a quarter note (G3). Measure 16: Treble clef is empty. Bass clef has a quarter note (F3) and a quarter note (G3).

17

Musical notation for measures 17 and 18. The system consists of a grand staff with a treble clef and a bass clef. The bass clef contains two measures of music, each with a single half note. The first measure contains a G2 note, and the second measure contains an A2 note. The treble clef is empty in both measures.

19

Musical notation for measures 19 and 20. The system consists of a grand staff with a treble clef and a bass clef. The bass clef contains two measures of music. The first measure contains a G2 note, and the second measure contains an A2 note. The treble clef is empty in both measures.

21

Musical notation for measures 21 and 22. The system consists of a grand staff with a treble clef and a bass clef. The bass clef contains two measures of music, each with a single half note. The first measure contains a G2 note, and the second measure contains an A2 note. The treble clef is empty in both measures.

23

D.C.al Coda

Musical notation for measures 23 and 24. The system consists of a grand staff with a treble clef and a bass clef. The bass clef contains two measures of music, each with a single half note. The first measure contains a G2 note, and the second measure contains an A2 note. The treble clef is empty in both measures.

✿ Coda

25

Musical notation for measures 25 and 26. Measure 25 features a treble clef with a whole rest and a bass clef with a half note G2. Measure 26 features a treble clef with a whole note chord (F4, A4, C5) and a bass clef with a half note G2.

27

Musical notation for measures 27 and 28. Measure 27 features a treble clef with a whole note chord (F4, A4, C5) and a bass clef with a half note G2. Measure 28 features a treble clef with a whole note chord (F4, A4, C5) and a bass clef with a half note G2.

29

Musical notation for measures 29 and 30. Measure 29 features a treble clef with a whole note chord (F4, A4, C5) and a bass clef with a half note G2. Measure 30 features a treble clef with a whole note chord (F4, A4, C5) and a bass clef with a half note G2.