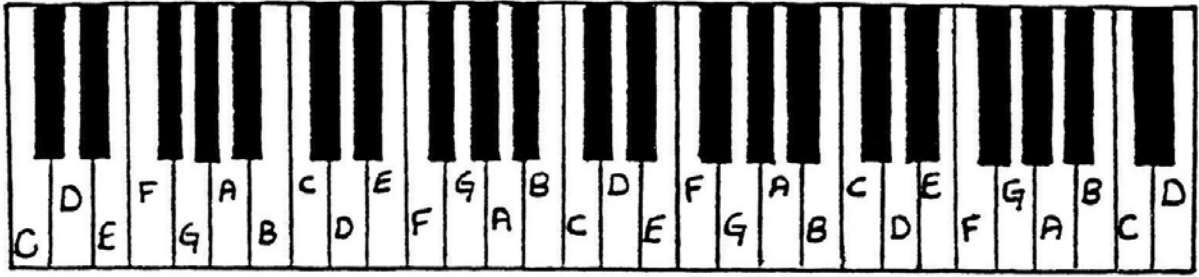


Some useful information....

A Diagram of the Keyboard



This is the Treble Clef also known as the 'G' clef because it circles around the 2nd line which represents the note G.



G

The 'Staff' is the name given to the 5 lines and 4 spaces used to write notation.

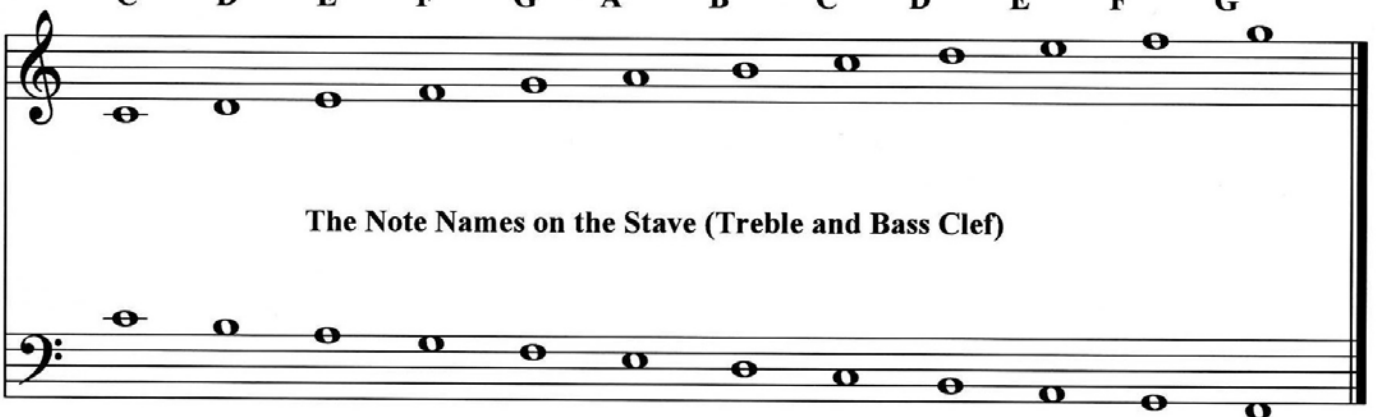
This is the 'Double Bar Line' and represents the end of a section or complete piece.

This is the Bass Clef also known as the 'F' clef because it circles around the 4th line which represents the note F. The two dots also come above and below the note 'F'



F

C D E F G A B C D E F G



The Note Names on the Staff (Treble and Bass Clef)

C B A G F E D C B A G F