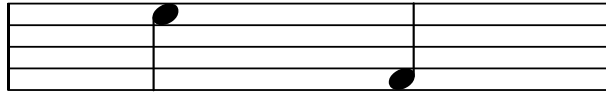


# Understanding Note Stem Directions



when the note head is written above the middle line, the note stem comes down

when the note head is written below the middle line, the note stem goes up



when the first note in a group is above the middle line, the note stems usually come down

with larger note groups, look at the majority of notes and decide whether they are written below or above the middle line



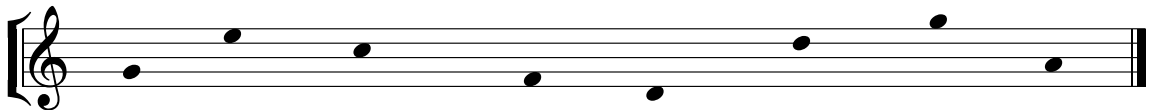
note stems going up are written on the right of the note head.

**Remember: Right Up There**

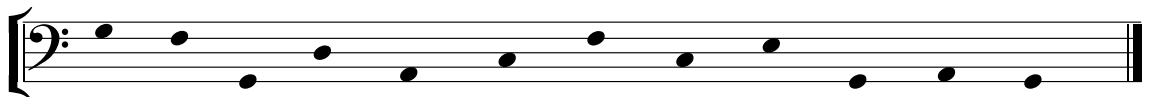
note stems coming down are written on the left of the note head.

**Remember: Left Down to Me**

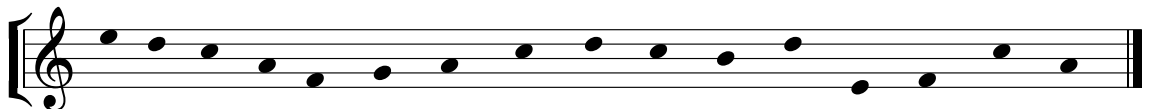
add the correct note stems to create crotchet beats



add the correct note stems to create pairs of quaver beats



add the correct note stems to create groups of 4 semiquaver beats



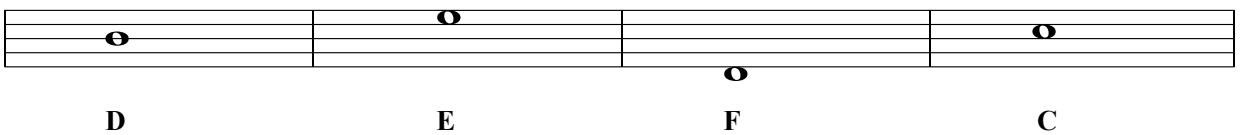
# Test of your Musical Knowledge

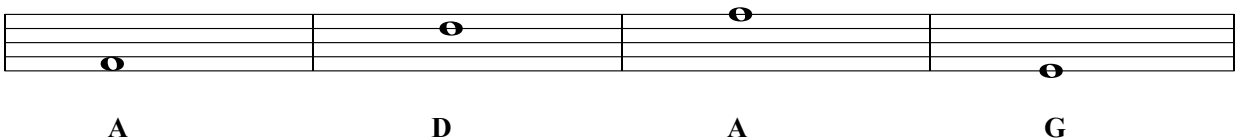
## (part one)

Please add the correct rest at the places marked with a \*

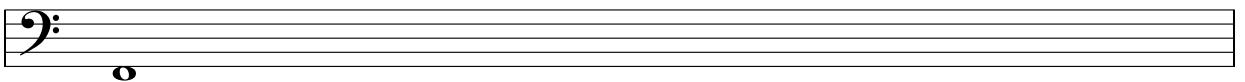
① 

Please add the correct clef (treble or bass) for the notes named below.

② 

③ 

Please write the scale of F Major (ascending) in semibreves. Do not use a key signature but add any necessary accidentals.

④ 

Please write the key signatures for the keys below and complete the Tonic triads.

⑤ 

Please name the following intervals. Which scale uses all of these notes? \_\_\_\_\_

⑥ 